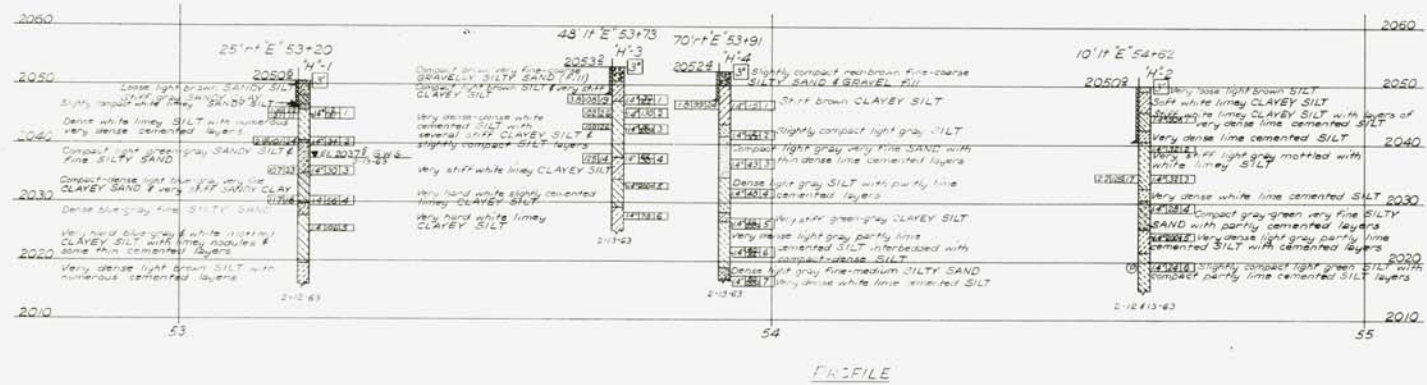


FED. ROAD DIST. NO.	STATE	PROJECT NO.	COUNTY	CONTROL SECTION	STATE ROUTE	SHEET NO.	TOTAL SHEETS
7	NEVADA	P-206 (1/53)	CLARK	CL-06		88	

HD-15



BM 84-3
Spike in D.P. #248M
250' of 'E' 54+00
Elev. 2084.14



LEGEND OF EARTH MATERIALS

SIZE CLASSIFICATION

MATERIAL SYMBOLS

	Gravel
	Silt or organic matter
	Sand
	Silt
	Clay
	Sandy clay or clayey sand
	Sandy silt or silty sand
	Silty clay or clayey silt
	Fill material
	Shale
	Sandstone
	Limestone
	Metamorphic rock
	Igneous rock

CONSISTENCY CLASSIFICATION

According to the Standard Penetration Test.

No. of blows	Granular	Cohesive
0-5	very loose	very soft
6-10	loose	soft
11-20	slightly compact	stiff
21-35	compact	very stiff
36-70	dense	hard
70+	very dense	very hard

LEGEND OF BORING OPERATIONS

ROTARY BORING

PENETRATION TEST

3303F-9

MOORE AND TABER
ENGINEERS - GEOLOGISTS

STATE OF NEVADA
DEPARTMENT OF HIGHWAYS

LOG OF TEST BORINGS

HIGHLAND DRIVE OVERPASS
I - 945

DE LEUW, CATHAR & COMPANY
ENGINEERS
SAN FRANCISCO, CALIFORNIA

SCALE: _____
DRAWN BY: _____
CHECKED BY: _____