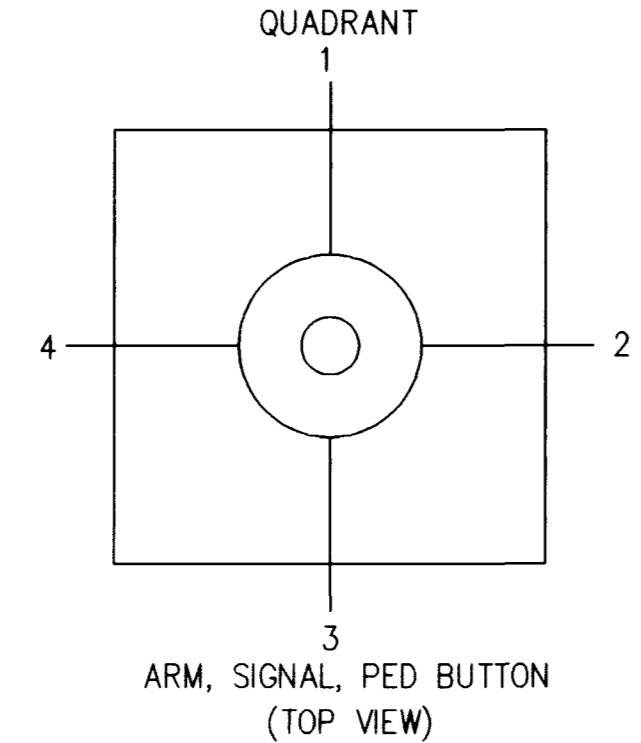


CONSTRUCTION NOTES:

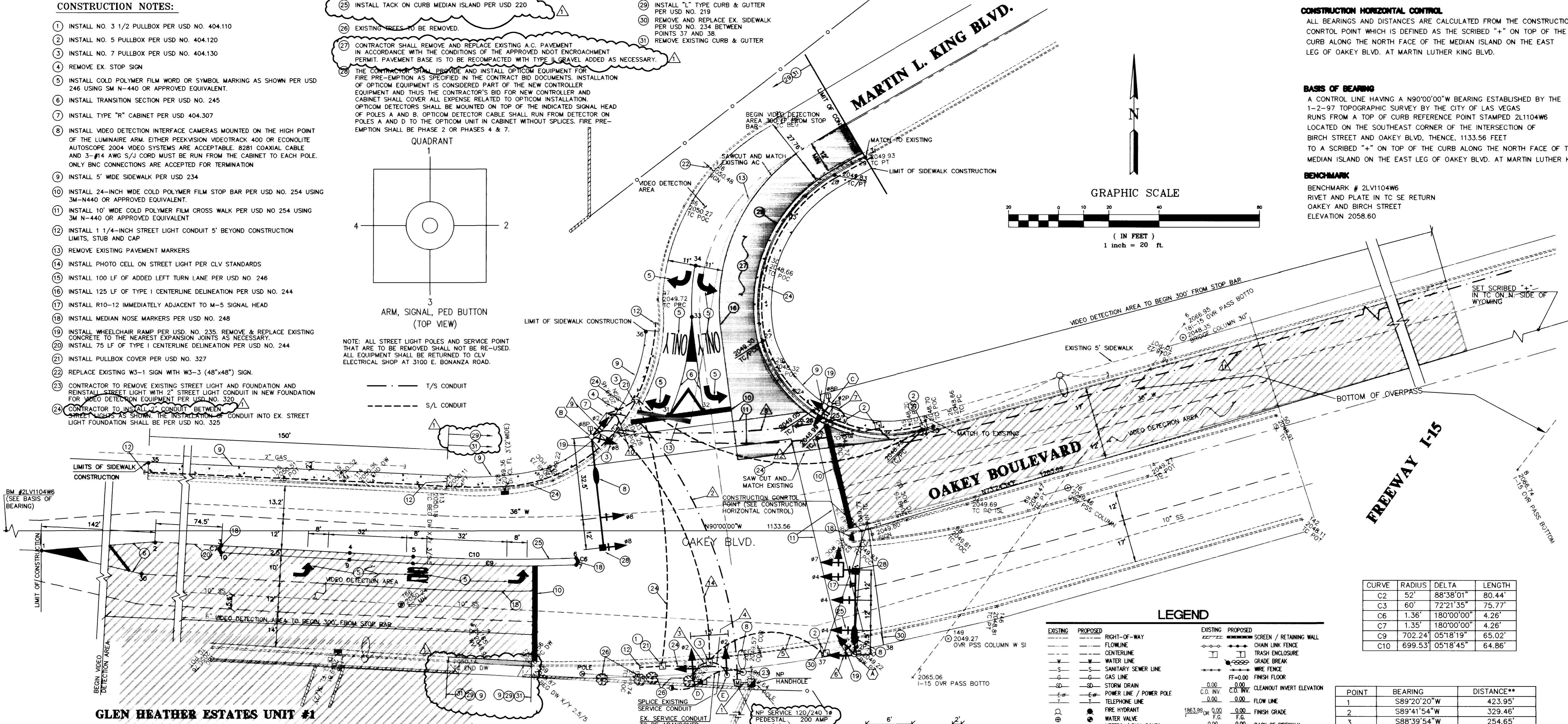
1. INSTALL NO. 3 1/2 PULLBOX PER USD NO. 404.110
2. INSTALL NO. 5 PULLBOX PER USD NO. 404.120
3. INSTALL NO. 7 PULLBOX PER USD NO. 404.130
4. REMOVE EX. STOP SIGN
5. INSTALL COLD POLYMER FILM WORD OR SYMBOL MARKING AS SHOWN PER USD 246 USING SM N-440 OR APPROVED EQUIVALENT.
6. INSTALL TRANSITION SECTION PER USD NO. 245
7. INSTALL TYPE "R" CABINET PER USD 404.307
8. INSTALL VIDEO DETECTION INTERFACE CAMERAS MOUNTED ON THE HIGH POINT OF THE LUMINAIRE ARM EITHER PEVXISION VIDEOTRACK 400 OR ECONOLITE AUTOSCOPE 2004 VIDEO SYSTEMS ARE ACCEPTABLE. 8281 COAXIAL CABLE AND 3-#14 AWG S/U CORD MUST BE RUN FROM THE CABINET TO EACH POLE. ONLY BNC CONNECTIONS ARE ACCEPTED FOR TERMINATION
9. INSTALL 5' WIDE SIDEWALK PER USD 234
10. INSTALL 24-INCH WIDE COLD POLYMER FILM STOP BAR PER USD NO. 254 USING 3M-N440 OR APPROVED EQUIVALENT.
11. INSTALL 10' WIDE COLD POLYMER FILM CROSS WALK PER USD NO. 254 USING 3M N-440 OR APPROVED EQUIVALENT
12. INSTALL 1 1/4-INCH STREET LIGHT CONDUIT 5' BEYOND CONSTRUCTION LIMITS, STUB AND CAP
13. REMOVE EXISTING PAVEMENT MARKERS
14. INSTALL PHOTO CELL ON STREET LIGHT PER CLV STANDARDS
15. INSTALL 100 LF OF ADDED LEFT TURN LANE PER USD NO. 246
16. INSTALL 125 LF OF TYPE I CENTERLINE DELINEATION PER USD NO. 244
17. INSTALL R10-12 IMMEDIATELY ADJACENT TO M-5 SIGNAL HEAD
18. INSTALL MEDIAN NOSE MARKERS PER USD NO. 248
19. INSTALL WHEELCHAIR RAMP PER USD. NO. 235. REMOVE & REPLACE EXISTING CONCRETE TO THE NEAREST EXPANSION JOINTS AS NECESSARY.
20. INSTALL 75 LF OF TYPE I CENTERLINE DELINEATION PER USD NO. 244
21. INSTALL PULLBOX COVER PER USD NO. 327
22. REPLACE EXISTING W3-1 SIGN WITH W3-3 (48"x48") SIGN.
23. CONTRACTOR TO REMOVE EXISTING STREET LIGHT AND FOUNDATION AND REINSTALL STREET LIGHT WITH 2" STREET LIGHT CONDUIT IN NEW FOUNDATION FOR VIDEO DETECTION EQUIPMENT PER USD NO. 320
24. CONTRACTOR TO INSTALL CONDUIT BETWEEN STREET LIGHTS SHOWING TO INSTALLATION OF CONDUIT INTO EX. STREET LIGHT FOUNDATION SHALL BE PER USD NO. 325

25. INSTALL TACK ON CURB MEDIAN ISLAND PER USD 220
26. EXISTING TREES TO BE REMOVED.
27. CONTRACTOR SHALL REMOVE AND REPLACE EXISTING A.C. PAVEMENT IN ACCORDANCE WITH THE CONDITIONS OF THE APPROVED NDOT ENCROACHMENT PERMIT. PAVEMENT BASE IS TO BE RECOMPACTED WITH TYPE II GRAVEL ADDED AS NECESSARY.
28. THE CONTRACTOR SHALL PROVIDE AND INSTALL OPTICOM EQUIPMENT FOR FIRE PRE-EMPTION AS SPECIFIED IN THE CONTRACT BID DOCUMENTS. INSTALLATION OF OPTICOM EQUIPMENT IS CONSIDERED PART OF THE NEW CONTROLLER EQUIPMENT AND THUS THE CONTRACTOR'S BID FOR NEW CONTROLLER AND CABINET SHALL COVER ALL EXPENSE RELATED TO OPTICOM INSTALLATION. OPTICOM DETECTORS SHALL BE MOUNTED ON TOP OF THE INDICATED SIGNAL HEAD OF POLES A AND B. OPTICOM DETECTOR CABLE SHALL RUN FROM DETECTOR ON POLES A AND B TO THE OPTICOM UNIT IN CABINET WITHOUT SPLICES. FIRE PRE-EMPTION SHALL BE PHASE 2 OR PHASES 4 & 7.
29. INSTALL "L" TYPE CURB & GUTTER PER USD NO. 219
30. REMOVE AND REPLACE EX. SIDEWALK PER USD NO. 234 BETWEEN POINTS 37 AND 38.
31. REMOVE EXISTING CURB & GUTTER



NOTE: ALL STREET LIGHT POLES AND SERVICE POINT THAT ARE TO BE REMOVED SHALL NOT BE RE-USED. ALL EQUIPMENT SHALL BE RETURNED TO CLV ELECTRICAL SHOP AT 3100 E. BONANZA ROAD.

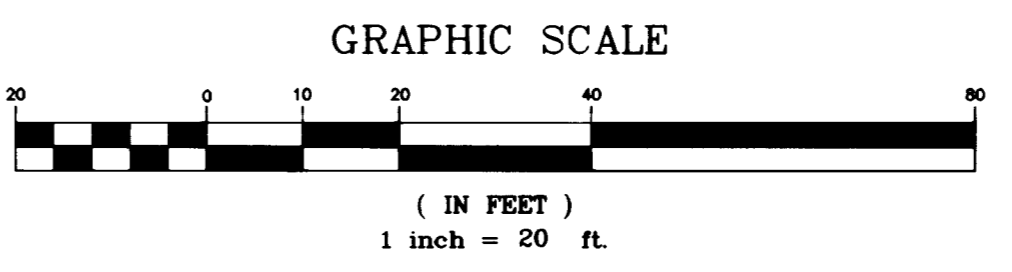
--- T/S CONDUIT
 --- S/L CONDUIT



CONSTRUCTION HORIZONTAL CONTROL
 ALL BEARINGS AND DISTANCES ARE CALCULATED FROM THE CONSTRUCTION CONTROL POINT WHICH IS DEFINED AS THE SCRIBED "+" ON TOP OF THE CURB ALONG THE NORTH FACE OF THE MEDIAN ISLAND ON THE EAST LEG OF OAKLEY BLVD. AT MARTIN LUTHER KING.

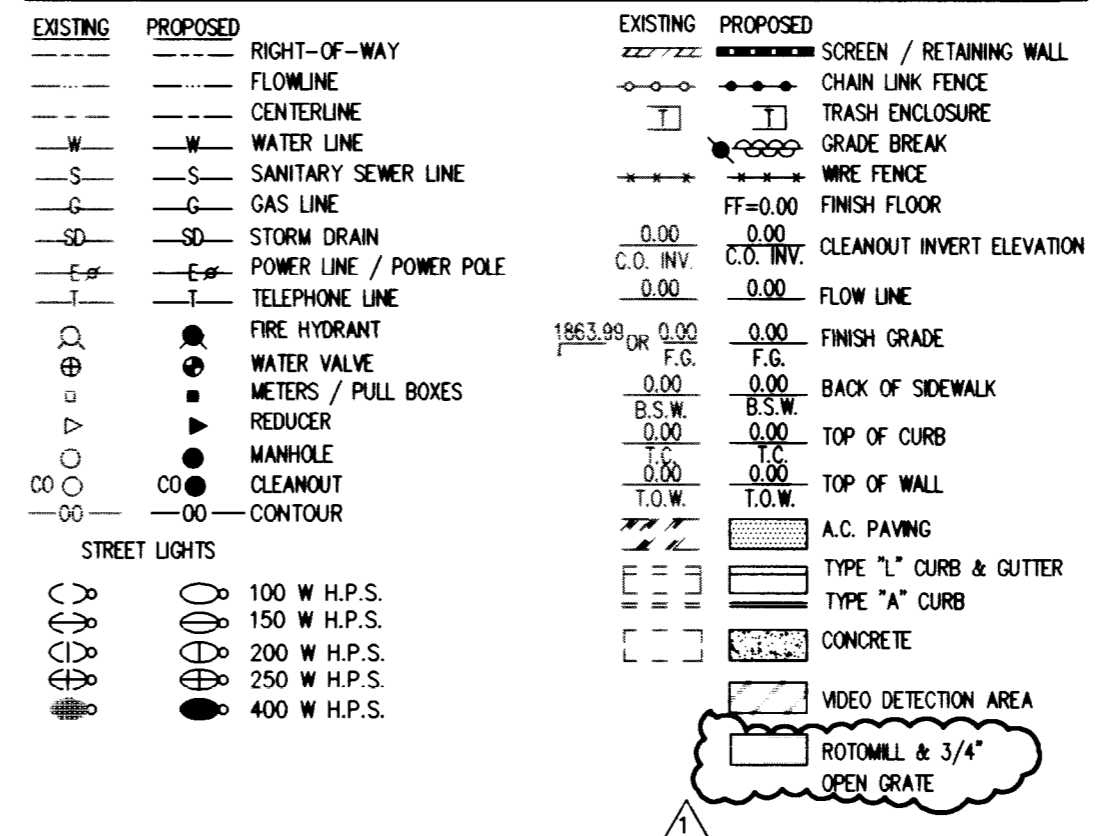
BASIS OF BEARING
 A CONTROL LINE HAVING A N90°00'00"W BEARING ESTABLISHED BY THE 1-2-97 TOPOGRAPHIC SURVEY BY THE CITY OF LAS VEGAS RUNS FROM A TOP OF CURB REFERENCE POINT STAMPED 2L1104W6 LOCATED ON THE SOUTHEAST CORNER OF THE INTERSECTION OF BIRCH STREET AND OAKLEY BLVD. THENCE, 1133.56 FEET TO A SCRIBED "+" ON TOP OF THE CURB ALONG THE NORTH FACE OF THE MEDIAN ISLAND ON THE EAST LEG OF OAKLEY BLVD. AT MARTIN LUTHER KING.

BENCHMARK
 BENCHMARK # 2L1104W6
 RIVET AND PLATE IN TC SE RETURN
 OAKLEY AND BIRCH STREET
 ELEVATION 2058.60



CURVE	RADIUS	DELTA	LENGTH
C2	52'	88°38'01"	80.44'
C3	60'	72°21'35"	75.77'
C6	1.36'	180°00'00"	4.26'
C7	1.35'	180°00'00"	4.26'
C9	702.24'	05°18'19"	65.02'
C10	699.53'	05°18'45"	64.86'

LEGEND



POINT	BEARING	DISTANCE**
1	S89°20'20"W	423.95'
2	S89°41'54"W	329.46'
3	S88°39'54"W	254.65'
4	S87°31'28"W	205.28'
5	S86°43'13"W	179.06'
6	S84°31'39"W	114.46'
7	S83°11'05"W	114.75'
8	S85°51'37"W	179.38'
9	S86°46'08"W	204.57'
10	S88°03'25"W	255.52'
23	N34°08'19"E	50.35'
24	N30°08'08"E	46.70'
25	N15°58'49"W	45.55'
26	N22°06'28"W	51.75'
27	N27°21'56"W	85.62'
28	N04°34'28"W	141.99'
29	N00°24'52"E	148.68'
30	S86°34'04"W	287.54'
31	N59°42'57"W	89.48'
32	N53°16'18"W	78.77'
33	N38°43'26"W	109.57'
34	N32°26'06"W	124.93'
35	N84°47'38"W	316.66'
36	N47°11'39"W	117.52'
37	N18°40'00"E	56.61'
38	S07°28'03"E	49.08'

**ALL DISTANCES MEASURED FROM SCRIBED "+" IDENTIFIED IN THE BASIS OF BEARING

RUN NO.	FROM	TO	CONDUIT SIZE	VIDEO DET.		LIGHTING OR.		INTERCONNECT		SERVICE	OPTICOM
				14 AWG	14 AWG	14 AWG	25 PAIR #2	25 PAIR #2	25 PAIR #2		
1	SERVICE POINT	PADMOUNT	1-4"							3-3/0 AWG THIN WIRE	
2	PADMOUNT	CONTROLLER	1-2"							4-#4 AWG THIN 2 BLK, 2 WHT	
3	POLE D	PULLBOX	1-3"	X							
4	POLE E	PULLBOX	1-3"	X							
5	PULLBOX	PULLBOX	1-3"	X	X	X					X
6	POLE A	PULLBOX	1-3"	X	X	X					
7	POLE C	PULLBOX	1-2"	X							
8	PULLBOX	PULLBOX	1-3"	X							
9	POLE B	PULLBOX	1-3"	X	X	X	X				X
10	PULLBOX	CONTROLLER	4-3" 2-2"	XXX	XX	XXX	XX	X			X
11	PULLBOX	NW CORNER OF WESTERN/OAKLEY	1-2"					X			
12	PULLBOX	PULLBOX	1-2"					X			
13	METER	STREETLIGHT	1-2"							2-1/0 THW 1-#4 WHT THIN	
14	PULLBOX	PULLBOX	2-3"	XX	XX	XX					X

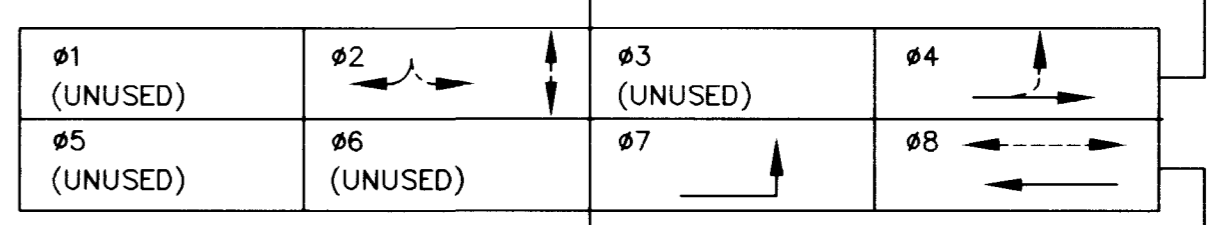
POLE	INTERNALLY ILLUMINATED STREET NAME SIGN (DOUBLE FACED)	BLOCK #
B	MARTIN L. KING	1600
D	OAKLEY	

NOTE: PER DRAWING 404.420 AND 404.417, LETTERS SHALL BE UPPER CASE SERIES E. SIGN SHALL BE WIDE ANGLE PRISMATIC RETRO REFLECTIVE SHEETING, SHALL BE DOUBLE FACE.

- CROSSWALK DETAIL (TYP.)**
- POLE SCHEDULE NOTES:
- CONTRACTOR TO VERIFY LOADING FACTORS WITH POLE/MAST ARM MANUFACTURER.
 - REMOVE EXISTING STOP SIGNS, AND RETURN TO THE CITY, UPON ACTIVATION OF TRAFFIC SIGNAL.
 - THE LOCATION OF ALL TRAFFIC SIGNAL POLES WILL BE APPROVED BY THE CITY OF LAS VEGAS TRAFFIC ELECTRICAL FIELD OPERATIONS (229-6331) PRIOR TO ANY POLE EXCAVATION AND AFTER THE CONTRACTOR HAS DETERMINED THE LOCATION OF UNDERGROUND AND OVERHEAD UTILITIES NEAR TRAFFIC SIGNAL POLE STATIONS AND OFFSETS.
 - ALL SIGNAL HEAD TENON PLACEMENTS TO BE DETERMINED AFTER POLE PLACEMENT IS DETERMINED. TENON PLACEMENT TO BE APPROVED BY THE CITY OF LAS VEGAS TRAFFIC/ELECTRICAL FIELD OPERATIONS (TELE 229-6331)

NO.	BEARING & DISTANCE*	TYPE	SIGNAL ARM		LUM. ARM		SIGNALS (VEH)		SIGNALS (PED)		PED. PUSH BUTTON	
			QUAD.	LENGTH	QUAD.	LENGTH	QUADRANT	TYPE	QUADRANT	MOUNTING	QUADRANT	ARROW
A	S 05°48'58" W 52.63	XX	1	35	1	15	MAST ARM	M-5(2)M-2	2	W-1T	4	LT
B	N 72°44'11" W 115.34	XX-A	3	45	3	15	MAST ARM	(2)M-2	1	W-1T	3	RT
C	N 17°51'25" W 49.52	1-A	NA	NA	NA	NA	TOP OF POLE	A-1BT	1	W-3T	3	LT
D	S 48°32'49" W 92.60	1-A	NA	NA	NA	NA	TOP OF POLE	A-BT	NA	NA	NA	NA
E	S 42°37'11" W 82.55	1-A	NA	NA	NA	NA	TOP OF POLE	A-2T	NA	NA	NA	NA

*ALL DISTANCES MEASURED FROM SCRIBED "+" IDENTIFIED IN THE BASIS OF BEARING
 **SIGNAL TO BE INSTALLED WITH 10' CLEARANCE ABOVE FINISH GRADE.



AVOID CUTTING UNDERGROUND UTILITY LINES. IT'S COSTLY.
Call before you Dig
 1-800-227-2600
 UNDERGROUND SERVICE ALERT (USA)

AVOID OVERHEAD POWER LINE CONTACT
Call before you OVERHEAD
 1-702-593-6111
 NEVADA POWER ENVIRONMENT AND SAFETY SERVICES DEPARTMENT

MARTIN & MARTIN ASSUMES NO RESPONSIBILITY FOR EXISTING UTILITY LOCATIONS AND ELEVATIONS. THE UTILITIES SHOWN ON THIS DRAWING HAVE BEEN PLOTTED FROM THE BEST AVAILABLE INFORMATION. IT IS, HOWEVER, THE CONTRACTOR'S RESPONSIBILITY TO FIELD VERIFY THE LOCATION AND ELEVATION OF ALL UTILITIES PRIOR TO THE COMMENCEMENT OF ANY CONSTRUCTION. CONTRACTOR TO FIELD VERIFY ALL EXISTING SITE CONDITIONS PRIOR TO CONSTRUCTION. IF A CONFLICT EXIST BETWEEN WHAT IS SHOWN ON THESE DRAWINGS AND WHAT EXISTS IN THE FIELD, THE CONTRACTOR IS TO NOTIFY THE ARCHITECT OR ENGINEER IMMEDIATELY.

MARTIN & MARTIN
 CIVIL ENGINEERS
 1909 SOUTH JONES BLVD.
 SUITE B
 LAS VEGAS, NEVADA 89102
 PHONE (702) 248-8000

MARTIN & MARTIN

REGISTERED PROFESSIONAL ENGINEER-STATE OF NEVADA
GABRIEL MENEZES
 CIVIL
 09649
 6/1/95

SIGNALIZATION PLAN
OAKLEY BOULEVARD
AND
MARTIN LUTHER KING
BID NUMBER 98.1730.18

name	date	description of revisions
name	4/30/98	REVISIONS FOR ADDENDUM 1
date	10/6/98	revise bfg & dist. prop. date schedule. (a thru e)
description of revisions		
no		
date	12-05-97	
job number	1624-02	
design by	D. SWALLOW	
drawn by	T. ORTIZ	
checked by	G. MENEZES P.E.	